

# CaseViewNet Cloud in Case CATalyst

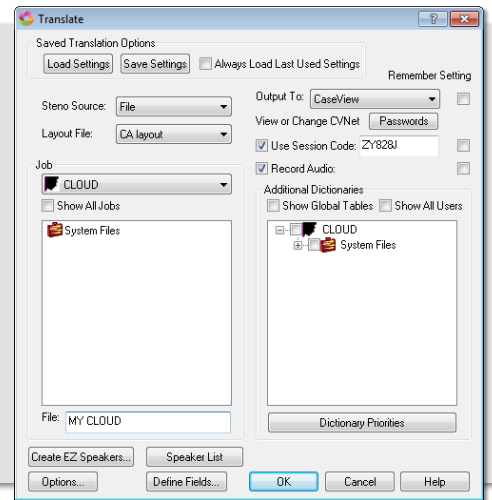
1 In Case CATalyst, click the **Translate & Edit icon** to display the translate dialog.

**Output To:** Select CaseView.

2 **View or Change CVNet Passwords:** Click the passwords button to setup the connection password you would like to use. You will give this password to clients connecting to your realtime. A password is mandatory and gives you the power to control who can connect.

3 **Use Session Code:** Select Use Session Code and then type your Session Code. You will give this Session Code to clients connecting to your realtime.

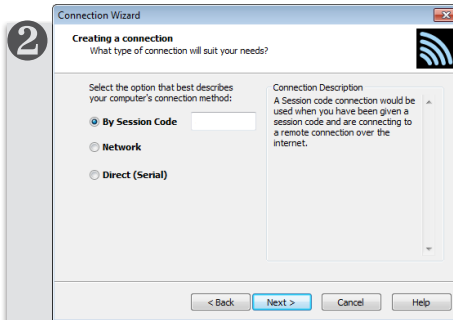
4 When you are ready to begin sending to CaseViewNet Cloud, click **OK**. It is that easy to use CaseViewNet Cloud in Case CATalyst!



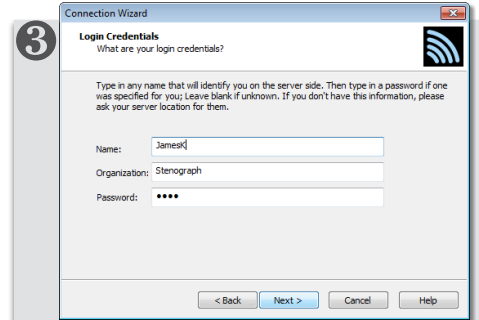
## Connecting to Cloud in CaseViewNet



1 In CaseViewNet, click the **Connect icon** to display the Connection Wizard.



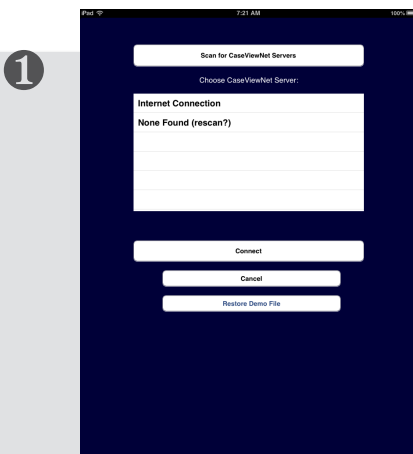
2 Click Next, select **By Session Code**, and then type your Session Code.



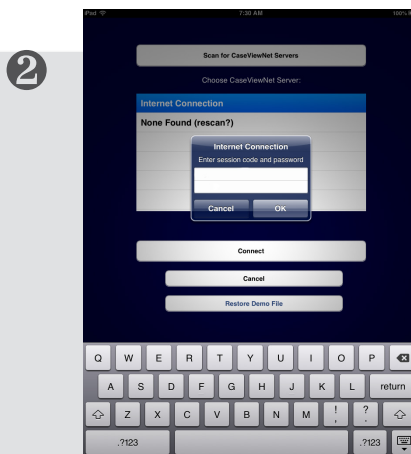
3 Click Next twice, and then type your **Password**.

4 Click **Next**, and then **Finish**. It is that easy to use Cloud in CaseViewNet!

## Connecting to Cloud in iCVNet



1 In iCVNet, tap the **Connect** button to display the Connection Screen.



2 Tap **Internet Connection**, and then input your Session Code and Password.

3 Tap **OK**. It is that easy to use Cloud in iCVNet!